



/ 2024

ANNUAL ACTIVITY REPORT OF THE ENS FONDATION



/ SOMMAIRE

- 3 EDITOR'S NOTE FROM STÉPHANE ISRAËL
- 4 A WORD FROM FRÉDÉRIC WORMS
- 5 A WORD FROM CAROLINE GUÉNY-MENTRÉ
- 6 THE HIGHLIGHTS OF 2024
- 8 KEY FIGURES OF THE FOUNDATION
- 10 YOUR IMPACT ON NORMALIEN STUDENTS
 - FINANCIAL AID SCHOLARSHIPS
 - WOMEN IN STEM SCHOLARSHIPS
 - OLYMPIC SCHOLARSHIPS
 - SCHOLARSHIPS IN MATHEMATICS, COMPUTER SCIENCE, AND AI
 - THE MEDICINE AND HUMANITIES PROGRAM
 - STUDENT TESTIMONIALS
- 14 YOUR IMPACT ON RESEARCH AND INNOVATION
 - ARTIFICIAL INTELLIGENCE
 - CLIMATE
 - HEALTH
 - GLOBAL HUMANITIES
 - THE RESEARCH CHAIRS
- 18 YOUR IMPACT ON THE HERITAGE OF THE ENS
 - RESTORATION OF ANCIENT BOOKS
 - RENOVATION PROJECTS
- 19 LEAVING A LEGACY FOR THE HERITAGE OF THE ENS
- 20 THE GOVERNANCE OF THE FOUNDATION
- 22 FUNDRAISING IN 2024
- 23 SIMPLIFIED ACCOUNTS
- 24 OUR DONOR RECOGNITION PROGRAMS
- 25 THANK YOU FOR YOUR ENGAGEMENT
- 26 SUPPORT THE ENS
- 28 THANK YOU TO OUR DONORS!
- 32 OUR ACTION IN 2024 IN FIGURES
- 33 THE ENS IN FIGURES



/ EDITOR'S NOTE



STÉPHANE ISRAËL
President of the ENS Foundation

With over 5.4 million euros raised in 2024, donations and sponsorships in support of the ENS Foundation have more than doubled compared to 2023. This remarkable success is thanks to your commitment and your dedication to the values of excellence, openness, and innovation that define the uniqueness of the École normale supérieure.

Thanks to your generosity, we are reaching an important milestone this year. The momentum you have created opens up exciting prospects for the years to come.

Research remains at the heart of the challenges we must collectively face. Climate change, democracy, health, and now centrally, artificial intelligence - explored in all its scientific, societal, and ethical implications through the ENS's IA+ program - are all strategic areas that engage our teaching and research community. Your support has enabled us to accelerate our actions in these fields, particularly through the launch of three new research chairs dedicated to climate in 2024, a testament to our ability to respond to the urgent issues of our time.

At the same time, we have continued our commitment to social inclusion, a vital mission to ensure equitable access to the high-level education offered by ENS. Thanks to you, the scholarship program for ENS students has further expanded, reaching a growing number of students, especially young women in scientific disciplines where they remain underrepresented.

Your contributions have also made it possible to preserve and enhance the School's heritage. The restoration of ancient works and the creation of spaces dedicated to teaching and research are just some of the achievements made possible through your generosity.

The year 2024 has been marked by major events for the Foundation: the launch of four new chairs, major debates, and alumni gatherings that strengthen the ties between generations of ENS students, reflecting the spirit of transmission and camaraderie that drives our community.

This momentum reflects the trust you place in the ENS Foundation and the School, and we are deeply grateful. I would like to especially acknowledge the work of the ENS Foundation team, which has gone above and beyond this year.

In a context where science and research - and the ethical and truth-seeking values they embody - are more essential than ever, the support of our community is indispensable.

On behalf of the entire ENS Foundation, a heartfelt thank you to each and every one of you for your support and generosity.



FRÉDÉRIC WORMS
Director of ENS-PSL

The year 2024 saw the joint momentum of the School and the ENS Foundation grow even stronger across all fronts, carrying with it great promise for the future as we face the challenges ahead.

In terms of research, the challenges of climate change, health, the role of the humanities in society, and now, more centrally than ever, artificial intelligence in relation to all of these areas ("AI+" as we call it at the School) represent strategic and societal stakes—matters of sovereignty and democracy. These challenges require the most advanced science, and since research lies at the heart of these issues and of mastering them, there is an urgent need to support and share it.

None of this would be possible without your contributions and your continued support for several of the School's research and training chairs, including three new ones dedicated to climate studies launched at ENS in 2024. This momentum has already borne fruit at the start of 2025 with the Paris Summit on Artificial Intelligence, led by Anne Bouverot, Chair of the ENS Board of Directors, in which we played a full and active role.

Social inclusion, one of our core missions, remains more central than ever to the École normale supérieure and to your support. Thanks to your donations, the scholarship program for ENS students continues. Every year, it benefits an increasing number of women, especially in disciplines such as physics and mathematics, where a genuine qualitative leap has taken place. Thanks to you,

this program now stands at the heart of one of the School's missions, in an area of national concern and interest.

Your donations have also enabled the restoration of ancient books and the enhancement of the School's heritage, with investments in spaces that bring together members of the teaching and research community and provide them with improved working conditions.

Finally, 2024 was marked by major events such as the *Night of Energy*. These *Nights of ENS* have now become a recognized meeting point between the world of research and civil society. I also want to acknowledge the momentum created by the ENS Foundation with the class reunion events, which will continue into 2025, and the involvement in graduation ceremonies, which have also become important moments of connection (with, of course, the A-Ulm alumni association as well).

All of these are opportunities to help you discover - or rediscover - ENS: its independent spirit, its passion for innovation, its commitment to serving society, and its gratitude for the Foundation's support. The deep momentum of the ENS Foundation's support for the School's projects has been clearly demonstrated by the doubling of donations and sponsorships compared to 2023. This is a powerful testament to your trust and to your dedication to the values and missions of the School.

None of this would be possible without the remarkable work carried out by the ENS Foundation team under the leadership of its president, Stéphane Israël, and its director, Caroline Guény-Mentré, who successfully mobilized and united a broader team (I want to highlight the excellent communications work of Romain Pigenel), and together with all of you, built a committed community.

This momentum strengthens our belief that, with you, we can continue to ambitiously pursue the projects that will shape the future of ENS.

Your support is essential. It is all the more crucial in this uncertain period, where science and research can be called into question. You know how much we care about academic and ethical principles in the way our scientists respond to the major challenges of our time.

A heartfelt thank you to each and every one of you, on behalf of the entire School, for your shared commitment to these efforts, which are more necessary now than ever before.



CAROLINE GUÉNY-MENTRÉ
Director of the ENS Foundation

A Landmark Year 2024 for the ENS Foundation

The year 2024 was an exceptional one for the ENS Foundation, reflecting the scale of the challenges facing our teaching and research community - and, more broadly, our society. More than ever, ENS needs the means to maintain its leading role in the production of knowledge and the development of solutions to today's most pressing issues.

Thanks to your commitment, we are continuing our efforts to strengthen our Equal Opportunity programs by increasing the presence of students receiving CROUS scholarships at the School. Today, nearly a quarter of the students admitted to ENS through the Student Normalien Entrance Exam already benefit from these support systems.

ENS remains a fertile ground for innovation, while keeping research and teaching at the heart of its mission: climate, artificial intelligence, global health, and democracy. Research - an engine of transformation and international influence - plays a decisive role in these advances, as evidenced by the rise of international initiatives related to AI within the School.

In 2025, we will have many opportunities to come together at events organized by the ENS Foundation, from thematic symposiums to class reunions that strengthen the bonds between generations of Normaliens.

On behalf of the entire team at the ENS Foundation, I want to express my deep gratitude for your support, which directly contributes to the future of ENS. We look forward to seeing you at the many gatherings we're organizing throughout the year.

Thank you all!

/ THE HIGHLIGHTS OF 2024

January 20th



Paying Homage to Daniel Cohen

The École normale supérieure paid tribute to economist Daniel Cohen (1953-2023) on the occasion of the posthumous publication of his final book, *A Brief History of Economics*, as well as the collection of tributes *Daniel Cohen, the Economist Who Wanted to Change the World*, whose royalties were donated to the ENS Foundation.

February 1st



Launch of the Espace Chair

The *Espace Chair*, the result of a collaboration between the leading French players in the space sector and the ENS Foundation, was launched in the historic hall of the humanities library. The event brought together its sponsors, members of the school's research community, and Stéphanie Ruphy, the scientific director of the chair.

March 6th



Women and Science Soirée

To highlight the *Women and Science* program and its commitment to gender parity in scientific fields, the ENS Foundation brought together its key supporters, as well as female students and high school students, for a roundtable discussion on the representation of women in scientific sectors.

April 2nd

Soirée Médecine-Humanités

Do Patients Have an Origin? : Two students from the *Medicine and Humanities* program presented their research on the theme selected for the 2024-2025 seminar.

April 3rd



Annual Donors Soiree

The Dussane Hall was packed for this evening dedicated to Artificial Intelligence, featuring presentations by Gabriel Peyré, Kimia Nadjahi, and Stéphane Mallat, as well as a discussion between Anne Bouverot and Arthur Mensch (founder and CEO of Mistral) on the impact of AI on society.

April 25th



Launch of the Ardian Chair

Dedicated to carbon storage in soils and subsoils, this six-year chair is supported by Ardian.

May 16th



Grand Patrons' Dinner

Esther Duflot, Nobel Prize-winning economist, and François Jackow, CEO of Air Liquide, discussed the economic challenges of the climate transition at the annual Grand Patrons' Dinner of the ENS Foundation.

May 23rd



Scholarship Recipient Cocktail Hour

The laureates of the ENS Foundation scholarship programs, along with their parents, were invited to a social reception to celebrate the end of the academic year and their graduation. The event was attended by the patrons of the ENS Foundation scholarships.

May 24th



Reunion for the Class of 1975

At the graduation ceremony, alumni from the class of 1975 were invited to take part in the event, which also marked the 50th anniversary of their entry into the school. Marie-Madeleine Castellani (Sèvres 1975) and Philippe Étienne, Ambassador of France (Ulm 1975), led the alumni delegation.

June 27th



Reunion for the Class of 2004

Twenty years after entering ENS, the archicubes of 2004 were invited back to the school for a reunion cocktail in the Cour aux Ernests.

September 5th



Reunion for the Class of 1999

Back-to-School for the Conscripts! For this key moment in the school's life, the alumni of 1999 were invited to return and celebrate the 25th anniversary of their entry into ENS.

September 20th



ENS Night

Professors, researchers, public policymakers, representatives from civil society, and the business world gathered at ENS for this major event, dedicated this year to Energy, which brought together several thousand participants.

October 10th

Scholarship Recipients' Welcome Reception

The patrons of the ENS Foundation scholarship programs and the 2024 scholarship recipients were invited to meet with the school's Director, Frédéric Worms, and the Director of the ENS Foundation, Caroline Guény-Mentré.

In October



AI Gatherings in New York and Houston

In October, *Friends of ENS* hosted a conference on AI at Villa Albertine in New York, featuring exceptional speakers such as Anne Bouverot, Yann Le Cun, and Hélène Landemore from Yale University. Later in the month, Frédéric Worms and Valérie Baraban, Consul General of France in Houston, welcomed ENS alumni, friends, and supporters in Texas for a dinner at Rice University dedicated to research at the school.

November 4th

Presentation of Internship Opportunities in Computer Science and Mathematics

CFM, Squarepoint, and Citadel, partners and patrons of the ENS Foundation, presented their internship opportunities to students in computer science, mathematics, and AI.

November 6th



AI Conference with Google and PRAIRIE

ENS hosted Prabhakar Raghavan, Chief Technologist at Google, for an exceptional conference on Artificial Intelligence, focusing on its applications in information and search engines.

November 26th



Launch of the MACIF Chair

On the theme *Climate Change: New Divides, New Forms of Solidarity*, this new chair, supported by MACIF, is co-directed by Aglaé Jezequel and Serge Paugam.

December 3rd

Ulm Library Visit

A meeting with workshop artisan Coralie Barbe, who revealed the meticulous steps involved in restoring rare and precious books.

/ KEY FIGURES OF THE FOUNDATION



1986 When the ENS Foundation was created



1 Sister structure in the United States (Friends of ENS)



+850 Individual donors

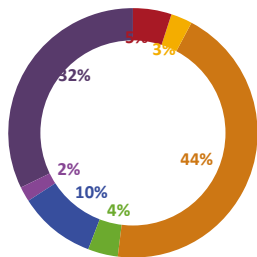


78 Companies and partner organizations

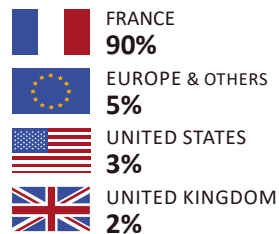


6 Individuals dedicated to the ENS Foundation

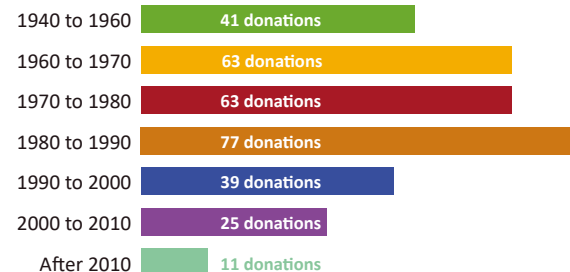
Allocation of Collected Donations by Focus Areas in 2024



Geographical Distribution of Individual Donors in 2024



Distribution of Donations Collected in 2024 by Alumni Class



/ YOUR IMPACT ON NORMALIEN STUDENTS



In 2024, only 30% of researchers in the scientific field are women. Unfortunately, this lack of gender parity is also reflected in the scientific cohorts of the École normale supérieure. However, significant progress has been made in recent years thanks to scholarship programs, particularly in the physics and mathematics departments, which admitted their first gender-balanced cohort through the Concours Normalien Étudiant - proof that these initiatives are effective! Efforts must continue to achieve full parity.



CHARLOTTE JACQUEMOT

Director of the Department of Cognitive Studies and Gender Equality Representative at ENS-PSL

The beginning of 2024 at the École normale supérieure was marked by an "Inclusive School" day, during which Frédéric Worms, Director of ENS-PSL, emphasized that inclusivity is at the heart of the school's mission.

ENS Goals for Inclusion:

30% of incoming student scholarship recipients by the end of 2025

50% women in admissions for the mathematics, physics, and computer science departments by 2030

Scholarship programs, fully funded by ENS Foundation donors, are essential to achieving these goals.



Financial Aid Scholarships

This program benefits scholarship students admitted to ENS through the *Concours Normalien Étudiant* (CNE), who do not have the status of trainee civil servants. The ENS Foundation's social scholarship provides a monthly supplement, the amount of which varies depending on their CROUS scholarship level.

147 STUDENTS RECEIVED A SOCIAL SCHOLARSHIP DURING THE 2023/2024 ACADEMIC YEAR

FOR THE FIRST TIME, THIS SCHOLARSHIP SUPPLEMENT COVERED **75% OF THE CROUS SCHOLARSHIP AMOUNT** (COMPARED TO 60% THE PREVIOUS YEAR)

25% OF ENS STUDENTS ARE CROUS SCHOLARSHIP RECIPIENTS



Now more than ever, it is essential to ensure that as many students as possible can benefit from support such as the ENS Foundation's social scholarships. These grants provide both material and psychological stability, fostering academic success. Having been a scholarship recipient myself during my secondary education, it felt natural to support these solidarity-driven initiatives. The number of beneficiaries continues to grow, and it is our contributions - even modest ones - that will help strengthen this vital momentum!



JÉRÉMIE PINGUET

Donor for the financial aid scholarships at the Foundation (2015 L)



Women in STEM Scholarships

Convincing female students that they are welcome in ENS's scientific programs and giving them the means to succeed in their studies - these are the goals of the Women and Science scholarship program. This initiative provides **€1,000 per month** for three years to all female students admitted through the *Concours Normalien Étudiant* (CNE) in the mathematics, physics, and computer science departments. After three years, the results speak for themselves:

30 RECIPIENTS SINCE THE PROGRAM'S LAUNCH, INCLUDING 15 NEW LAUREATES IN 2024

FIRST GENDER-BALANCED COHORT IN THE MATHEMATICS DEPARTMENT IN 2024, FOLLOWING THE PHYSICS DEPARTMENT IN 2023 (CNE ADMISSIONS)

+50% INCREASE IN FEMALE APPLICANTS FOR THE PHYSICS CNE IN 2023

+30% INCREASE IN FEMALE APPLICANTS FOR THE MATHEMATICS CNE IN 2024

To encourage young women to pursue their passion for science, it is essential to provide them with role models - successful female scientists who thrive in their studies and careers. With these scholarships, we aim to address the lack of female representation in science. We are excited to see the tangible and immediate impact of this scholarship program!



ELISABETH ET JEAN-PHILIPPE BOUCHAUD
Donors for the Women in STEM Scholarships (1981 S)



Olympic Scholarships

For the past five years, the *Olympic Scholarship Program* has helped the École normale supérieure recruit top international talent in mathematics. Recipients are gold or silver medalists from the International Mathematical Olympiad. They receive a half-study scholarship for one year of preparation at Lycée Louis-le-Grand, followed by a €1,000 monthly scholarship for their three years of study at ENS.

2 NEW OLYMPIC SCHOLARS JOINED THE SCHOLARSHIP PROGRAM IN 2024

6 INTERNATIONAL STUDENTS HAVE BEEN RECRUITED TO ENS THROUGH THIS PROGRAM SINCE ITS LAUNCH IN 2019

I am very happy that the Olympic Scholarship Program gives young Olympiad winners the opportunity to follow the same path as I did.



NGÔ BAO CHÂU
2010 Fields Medalist, Professor at the University of Chicago, and Scientific Director of the Vietnam Institute



Scholarships in Mathematics, Computer Science, and AI

To attract top French and international talent in data science, AI, and machine learning, ENS launched this new scholarship program two years ago. Students admitted to these departments through the *Concours Normalien Étudiant* (CNE) receive a €1,000 monthly scholarship for their three years of study.

10 NEW RECIPIENTS IN 2024, INCLUDING 7 IN COMPUTER SCIENCE AND 3 IN MATHEMATICS

27 RECIPIENTS SINCE THE PROGRAM'S INCEPTION

I am fully aligned with the goal of this scholarship, as it both enhances ENS's influence and capacity in the crucial field of AI and, most importantly, ensures that as many students as possible benefit from the world-class education offered by its faculty—while reducing inequalities linked to financial resources.



DAVID DURRLEMAN
Donor, Co-founder of Shift Technology (2004 S)



The Medicine and Humanities Program

In 2024, the *Medicine-Humanities* program at the École normale supérieure celebrated its sixth anniversary. This innovative and unique program in France offers a high-level hybrid curriculum, combining medical studies with advanced research training in the humanities (literature, philosophy, ancient studies, history, art history, geography, social sciences, and economics).

Designed as a three-year program, it is intended for medical students who wish to complement their professional training with an elite interdisciplinary education, leading to a research Master's degree in humanities and the ENS diploma.

The program's goal is to prepare students for the challenges of tomorrow's medicine, fostering physicians who are more attuned to the human, ethical, social, and economic issues inherent to medical practice.

Each year, five second-year medical students are selected through a competitive process and receive a €1,000 monthly scholarship for the three years of their studies at ENS.

The ENS Foundation aims to increase targeted donations toward these scholarships to ensure the long-term sustainability of the program in the years to come.

/ STUDENT TESTIMONIALS

During my studies, I was a CROUS scholarship recipient. The additional support from the Foundation was a real help - it allowed me to make ends meet without stress and even gave me some breathing room. Thanks to it, I wasn't just surviving in Paris; I was able to thrive, occasionally enjoying its rich cultural life. This support helps scholarship students integrate into both the academic and Parisian communities, making it easier to bridge the cultural gap for those of us who grew up far from the capital.

CLÉMENT
Social Scholarship Recipient (2018 S)



The social scholarship allowed me to pursue my studies with greater peace of mind. Thanks to this support, I didn't have to worry too much about financing my education, and I never felt pressured to work alongside my studies to make ends meet.

INÈS
Social Scholarship Recipient (2019 I)



I entered ENS in 2022 through the Concours Normalien Étudiant in Physics. During my first year at the school, since I was not a scholarship recipient, I worked up to seven hours a week to finance my studies in Paris. The Femmes et Sciences scholarship now allows me to focus entirely on my studies - I have more time and energy to dedicate to them. This will open up more opportunities for me in the future. For example, I will be able to apply for international internships that would have been inaccessible without this scholarship.

MÉLANIE
Femmes et Sciences Scholarship Recipient (2022 S)



In a context of rising inflation, the scholarship and its supplement allowed me to focus on my studies and research throughout my time at school. I believe that without it, there are many things I wouldn't have been able to do, such as participating in a strategic cybersecurity challenge that I won with friends.

R.
Social Scholarship Recipient (2020 S)

Until my first year of prep school, I had experienced gender parity. It was quite exceptional, showing a positive evolution in our society. But in the second year, girls represented about a quarter of the class; in the third year of physics at ENS, the same; in the third year of mathematics, even fewer. At ENS, I have had classmates who are very respectful and open-minded, which makes me feel comfortable in my cohort. I noticed that the number of girls in the third year of physics was exceptionally high compared to previous years, probably thanks to the scholarship. It's a great step forward.

A.
Women and Science Scholarship Recipient (2023 S)



I was convinced by the excellence and reputation of ENS, but also by the scholarship program, which allows students to live comfortably and fully dedicate themselves to their studies. I entered ENS in September 2023. The level of academic rigor is higher than in Vietnam, which pushes me to strive for excellence in this discipline. In my opinion, being a student at ENS will be a real springboard for my career.

DANG
Olympic Scholarship Recipient (2023 S)

/ YOUR IMPACT ON RESEARCH AND INNOVATION

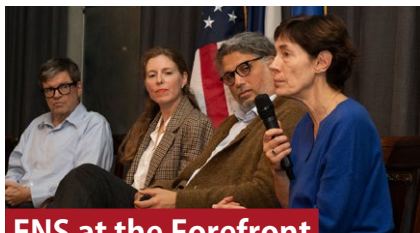
“ The support of patrons, whether businesses or individuals, is crucial for the development of ENS. In 2024, their commitment has strengthened the School's capacities in four major areas: health, artificial intelligence, climate, and global humanities. Notable advancements include the development of the QBio laboratory, the creation of two climate-focused chairs supported by MACIF, and the launch of a multidisciplinary chair dedicated to space. Through these initiatives, ENS continues to play a key role in research and innovation in addressing contemporary challenges.



VIRGINIE BONNAILLIE-NOËL
Deputy Director for Sciences at ENS-PSL

Four major axes of research at the Ecole Normale Supérieure:

1. Artificial Intelligence



**ENS at the Forefront
of AI Research**

For over 15 years, the École normale supérieure has been at the cutting edge of AI research, particularly through its Data Science Center (founded in 2020) and, more recently, the AI and Society Institute. The latter, inaugurated at the end of 2023 and hosted at ENS-PSL, explores innovative approaches to the responsible use of AI by studying its interactions with society.

The ENS is also home to several internationally renowned researchers in various AI fields, including data analysis and statistical processing (Stéphane Mallat), statistical learning and optimization (Michael I. Jordan, Francis Bach), computer vision and robotics (Jean Ponce, Cordelia Schmid), optimal transport theory, imaging, and machine learning (Gabriel

Peyré), and complex data management (Pierre Senellart).

As an inherently interdisciplinary field, AI thrives at ENS thanks to its unique research environment. Groundbreaking approaches to AI have already emerged from collaborations with statistical physics, cognitive sciences, and climate sciences.

In 2024, the ENS Foundation played a key role in making this research accessible by organizing discussions on AI-related challenges at various events attended by hundreds of donors and ENS supporters. These included the annual donors' evening featuring Anne Bouverot (President of the Abeona Foundation and ENS-PSL Board of Directors) and Arthur Mensch (Founder and CEO of the startup Mistral), as well as a gathering in New York with Yann LeCun (META), Hélène Landemore (Yale), and Jamal Atif (Dauphine-PSL).

Thanks to the support of corporate sponsors (Louis Vuitton Malletier, Groupe Casino, and Be Ys), three research chairs have been contributing for several years to the study of AI applications, fostering the development of innovative technologies in industries such as manufacturing and cybersecurity.

2. The Climate



**Two New Chairs
Dedicated to the Climate**

In 2024, MACIF and Ardian joined Chanel as sponsors supporting research chairs dedicated to studying climate change and its effects.

Supported by MACIF, the chair *Climate Change: New Fractures, New Mutualizations* examines extreme climate events through the lens of both exact sciences and social sciences.

It is co-directed by Aglaé Jezequel, a climatology researcher at the Dynamic Meteorology Laboratory – IPSL, and Serge Paugam, director of the Maurice Halbwachs Center.

3. Health



**QBio, The European
Laboratory for
Quantitative Biology**

For the past four years, the QBio laboratory - both a research and training center - has been advancing cutting-edge research to enhance our understanding of living organisms. In 2024, its teams explored diverse topics to address critical health challenges: antibiotic resistance, AI as a tool to study antibody development, and microbial community responses to bacteriophages.

In 2024, QLab celebrated its first anniversary and took part in PSL Week, showcasing its research to a wide audience of scholars and students. This training hub aims to provide a range of measurement tools and experimental resources, enabling researchers from all disciplines to discover and train in

IN 2024

2 VISITING PROFESSORS
BORIS SHRAIMAN, KAVLI INSTITUTE
FOR THEORETICAL PHYSICS AND JOHN
BARTON, UNIVERSITY OF PITTSBURGH

**1 JUNIOR RESEARCH
CHAIR FELLOW RECRUITED**
FRANCESCA SCHÖENBERG

the challenges of living systems, fostering interdisciplinary integration and innovation.

A Team of Excellence

The best talents make up the QBio research team, with several members receiving prestigious distinctions in 2024 for their groundbreaking work. Massimo Vergassola, director of QBio, was elected a member of the Academia Europaea. Aleksandra Walczak, who studies virus-immunity coevolution, was awarded the CNRS Silver Medal, while Laura Cantini received the Bronze Medal for her research at the interface of biology and mathematics. Finally, postdoctoral researcher Xiaowen Chen was among the laureates of the 2024 L'Oréal-UNESCO Young Talents France Award.

To understand how living systems function, we must make sense of the collected data. This involves developing specialized methods for analyzing these data, but also formulating questions about how our current observations combine to produce reproducible processes. In turn, these theoretical approaches will guide more insightful experiments, helping us understand living organisms at all scales.

ALEKSANDRA WALCZAK
Member of QBio and CNRS Research Director at ENS-PSL



Upcoming Developments

QBio's upcoming research will focus on studying the influence of cellular organization on cell identity, predicting co-evolution between viruses and immunity, understanding how neural circuits adapt to resource scarcity (with applications in AI research), and exploring how neural circuits mature during development. To carry out these cutting-edge studies, QBio continues to strengthen its teams by welcoming a new international young researcher each year. The support of our donors remains essential to enable these recruitments.

QBio is an interdisciplinary research and innovation project focused on living systems. Its goal is to bring together researchers from different disciplines and provide them with a wide range of computational and simulation tools, as well as a FabLab equipped with various experimental resources. I am convinced that collaborative and interdisciplinary research is far more productive in generating incremental innovations, as each discipline benefits from the advancements made in others.



CHRISTOPHE GUIR
QBio Donor (1983 S)

THANKS TO THE EXCEPTIONAL DONATION FROM NICOLAS PAULMIER, EVERY DONATION IN SUPPORT OF QBIO IS DOUBLED UP TO 2 MILLION EUROS

I decided to support this ambitious project and encourage everyone who wishes to contribute, to support education, excellence in research, and interdisciplinarity. It is a way to share and, I hope, to inspire momentum among donors.



NICOLAS PAULMIER
Grand mécène QBio (1983 S)

4. Global Humanities



First Year of the Space Chair

Launched in early 2024, the Space Chair has, within a year, recruited three researchers (two postdoctoral fellows and one doctoral student) who have worked on a variety of topics, ranging from the techno-aesthetic analysis of space activities to the equitable distribution of space resources, the mapping of controversies and political theories around the notion of property, and the study of satellite data collection and the construction of climate variables. The first scientific monitoring and steering committees have been held, bringing together researchers, experts, and partners to reflect on the major interdisciplinary challenges of space for the coming year.

Led by Stéphanie Ruphy, the chair examines space through the lens of the humanities and social sciences and is fully in line with the transdisciplinary and innovative research approach of ENS-PSL.

ZOOM

13 Chairs and Research Programs Supported by Patrons

Observatory of the impact of AI on the environment LAUNCHED IN 2024



The Ardian Chair - Carbon Storage in Soils and Subsoils LAUNCHED IN 2024

ARDIAN

Scientific Director: Jérôme Fortin

The MACIF Chair - Climate Change: New Divides, New Mutualizations LAUNCHED IN 2024



Scientific Director: Aglaé Jézéquel et Serge Paugam

The Space Chair - Airbus, Air Liquide, Arianegroup, CNES, Eutelsat, Gifas, Safran, Sodern, Thales Alenia Space LAUNCHED IN 2024



Scientific Director: Stéphanie Ruphy

The Abeona Chair - Artificial Intelligence and Social Justice



Visiting Scholars: Kate Crawford, Karine Gentelet et Anne-Sophie Hulin

The AXA Chair - Geopolitics of Risk



Scientific Director: J. Peter Burgess

The Be Ys Chair - Data Science and Cybersecurity



Scientific Director: David Naccache

The Casino Chair - Algorithmics and Machine Learning



Scientific Director: Pierre Aboulker

The Chanel Chair - CO₂ Capture in the Oceans



Scientific Director: Laurent Bopp

Dassault Systèmes - Interdisciplinary Program: Theoretical Foundations of Biology



Scientific Director: Maël Montévil

Louis Vuitton Chair - Artificial Intelligence

LOUIS VUITTON

Scientific Director: Jean Ponce

The Mitsubishi Chair - Quantum Information Theory



Scientific Director: Christina Psaroudaki

The Notre Europe Chair - European Anthropology



Scientific Director: Alexandra Arkhipova

/ YOUR IMPACT ON THE HERITAGE OF THE ENS

Within a collection of nearly one million books, the ENS libraries preserve more than 25,000 works published before 1831, reflecting the encyclopedic nature of our collections: classics, historical and archaeological compendiums, travel accounts, literary and philosophical texts, as well as scientific books. Among these, there are 26 incunabula and over a thousand works published in the 16th century. Thanks to the support of donors and patrons, the library can ensure the conservation and restoration of books weakened by time and handling, acquire rare and valuable editions to enrich our collections, and catalog and reference these holdings in the online library database.



IEGOR GROUDIEV
Director of the ENS-PSL Libraries



Restoration of Ancient Books

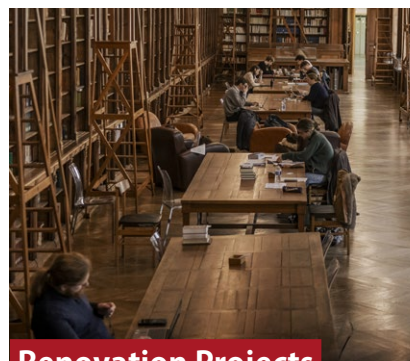
In 2024, donations from ENS patrons enabled the restoration of seven precious works in the libraries, including an exceptional Treatise on Architecture by Vitruvius (1586), the Complete Works of Jean de Murs (1746), and a treatise by Johann Gottfried Hasse from 1802, formerly owned by the Marquis de Morante. Other selected works for restoration included Trésor héraldique, ou Mercure armorial (Charles Segoing, 1657) and Sphaerae atque astrorum (a composite volume by Berosus and Aratus) dating back to 1536.

Their restoration, carried out by professionals from the National Institute of Heritage, was made possible thanks to the support of donors, effectively extending the life of these collections by another 200 years.

FROM 20,000 WORKS IN 1847
TO 900,000 TODAY,
NEARLY 23 KM OF COLLECTIONS
SERVE EDUCATION AND RESEARCH.

The School, where I entered in 1967, was above all a library for me - and an exceptional librarian, Pierre Petitmengin. It is clear that wandering through the shelves, with a clever classification system, not only enriched my work but also satisfied my curiosity. When I left the School, I visited many libraries - rich and ancient - in many countries, but few allowed me the same freedom to move through the aisles, to browse at my leisure across different branches of knowledge. And now, returning to the Bibal as an almost octogenarian, I sometimes feel as if I am meeting my younger self, sixty years younger, sitting on the floor, consulting some book from the lower shelves.

JEAN-ROBERT ARMOGATHE
Donor for the library (1967 L)



Renovation Projects

For the coming years, the School aims to renovate certain spaces within the library at 45 rue d'Ulm. The first priority is the historic reading room of the Letters Library, inaugurated in 1847. Given the heritage value of this space, the School plans a comprehensive renovation to modernize equipment and lighting while preserving its historical character.

Additionally, other heavily frequented study rooms - Literature (770m²) and History (820m²) - built in the 1930s, also require full renovation. The goal is to modernize them while maintaining their functionalist "Art Deco" identity, ensuring greater comfort for students and researchers.

Michael Serres Archives

In 2024, €14,000 in unrestricted donations were allocated to the Michel Serres project.



Initiated by the philosopher himself, this project aims to promote his ideas and support research on his work. Donations help fund the inventory and digitization of archives, as well as the organization of conferences, seminars, and study days.

In 2024, a seminar series explored the connections between Michel Serres and the sciences, and a study day was held on the theme "Michel Serres, Cybernetics, and Information as a Physical Quantity."

Leaving a Legacy for the Heritage of the École Normale Supérieure



The ENS Foundation, recognized as a public-interest organization, is authorized to receive legacies.

Through a legacy, you can defer your support to the École Normale Supérieure and finance the Foundation's initiatives posthumously by transferring one or more assets upon your passing.

There are several types of legacies:

→ **Universal legacy:** You bequeath your entire estate.

→ **General legacy:** You bequeath a portion of your estate or a specific category of assets.

→ **Specific legacy:** You bequeath one or more precisely designated assets in your will.

As the ENS Foundation is recognized as serving the public interest, all legacies to the Foundation are entirely tax-exempt.

To learn more, **request the legacy brochure** by writing to:
fondation-ens@ens.psl.eu

Discuss your legacy project by contacting:
caroline.gueny-mentre@ens.psl.eu

/ THE GOVERNANCE OF THE FOUNDATION



STÉPHANE ISRAËL
President of the ENS
Foundation (1991 L)



**CAROLINE
GUÉNY-MENTRÉ**
Director of the ENS
Foundation (1997 L)



ANNE BOUVEROT
President of the Board of
Directors of the ENS (1985 S)



XAVIER LAZARUS
Director of the Campaign
Committee (1991 S)

The institutional founding members who enabled the creation of the ENS Foundation are: Allianz, Areva, Axa, BPCE, BPI France, Bull, CEA, Crédit Agricole, EDF, Havas, Lagardère, Saint-Gobain, Sanofi, Solvay, and Veolia.

The individual founding members are: Yves Cannac, Laurence Danon, Gilles de Margerie, Philippe Mahrer, Jean-Charles Naouri, and Lionel Zinsou.

The Association of Alumni of the École normale supérieure (now a-Ulm), the Club des Normaliens dans l'Entreprise, and the ENS Institute also contributed to the establishment of the ENS Foundation.

Board of Directors of the Foundation

PRESIDENT

Stéphane Israël

FOUNDERS

Dominique D'Hinnin, ENS Institute
Helman le Pas de Sécheval, Veolia
Antoine Winckler, CNE
Anne Bouverot

COLLEGE OF INSTITUTIONAL PARTNERS

Cédric Denis-Rémis, PSL
Myriam Fadel, ENS-PSL
Frédéric Worms, ENS-PSL
Christophe Guiraud, CNRS

COLLEGE OF QUALIFIED PERSONALITIES

Jean-Philippe Bouchaud, Capital Fund
Management
Catherine Dulac, Université Harvard
Stéphane Israël, Boston Consulting Group
Xavier Lazarus, Elaia

GOVERNMENT COMMISSIONER

Xavier Doublet

PERMANENT INVITEES WITH ADVISORY VOTE

Nicolas Obtel, a-Ulm
Caroline Guény-Mentré, ENS Foundation

STATUTORY AUDITOR

Jérôme Eustache, Forvis Mazars

Investment Committee

The Investment Committee provides its expertise in managing the funds raised, donations, and bequests, in order to create a stable source of long-term financing.

MEMBERS

Nicolas Paulmier, President
Dorothee Stik
Dominique D'Hinnin
Emmanuel Boussard
Yacine Dolivet
Marc Romano

PERMANENT GUESTS

Stéphane Israël, President of the ENS
Foundation
Frédéric Worms, Director of ENS-PSL
Caroline Guény-Mentré, Director of ENS
Foundation

Audit Committee

MEMBERS

Dominique D'Hinnin, ENS Institute
Helman le Pas de Sécheval, Veolia
Myriam Fadel, ENS-PSL

PERMANENT INVITEES

Caroline Guény-Mentré, Director of ENS
Foundation
Frédéric Worms, Director of ENS-PSL
Stéphane Israël, President of the ENS
Foundation

Friends of
École normale supérieure



Friends of École normale supérieure Foundation is a foundation that has 501(c)(3) status under the U.S. Internal Revenue Code.

MEMBERS OF THE BOARD OF DIRECTORS

Philippe Camus, President (1967 S)
Philippe Etienne, Honorary President
(1974 S)
Frédéric Worms, Vice President, ENS-PSL
(1982 L)
Yacine Dolivet, Secretary and Treasurer
(1999 S)
Bénédicte de Montlaur, Chief Executive
Officer, World Monument Fund (1998 L)
Souleymane Bachir Diagne, Professor at
Columbia University (1977 L)
James E. Rothman, Professor at Yale
University, Nobel Prize winner



We decided to create a foundation in the United States to support the fundraising efforts of the École normale supérieure and the ENS Foundation. This led to the establishment in 2017 of Friends of ENS Foundation: a public charity with 501(c) status. This foundation can receive donations from individuals, corporations, and foundations in the United States and issue tax receipts. Its mission also includes promoting international mobility for students and researchers, and contributing to the global reach of the École normale supérieure through its network of alumni based in the U.S. and its academic partnerships. I am very pleased to serve as President of Friends of ENS and to contribute in this way to its development beyond our borders.



PHILIPPE CAMUS
President of Friends of ENS Foundation

/ FUNDRAISING IN 2024

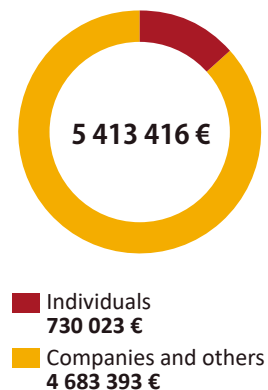
The ENS Foundation and the École normale supérieure are deeply grateful to their patrons for their generosity: in just one year, fundraising has more than doubled, exceeding **5.4 million euros raised in 2024**. This amount includes both the donations collected by the ENS Foundation and those raised by its American sister entity, Friends of ENS, which amounted to **over \$292,000 in 2024**.

Excluding the funds allocated to the Foundation's development - which were exceptionally high in 2023 due to a bequest - each area saw a significant increase in resources from public generosity compared to last year.

- **Support for ENS students remains one of the key pillars of fundraising in 2024**, with €1,747,891 in donations and financial contributions allocated to the ENS Foundation's scholarship programs. Of this, €1,067,000 was designated for the *Women in Science* program launched in 2023. This program notably benefited from an exceptional contribution of €505,000 from the **La Ferthé Foundation**, under the umbrella of the **Fondation de France**. Other ENS Foundation scholarship programs (social scholarships, mathematics, computer science and AI scholarships, Olympic scholarships, and the Medicine and Humanities program) received €681,000, including a €215,000 contribution from **Friends of ENS**, thanks to the generosity of two patrons
- **Chairs received a total of €2,370,000**, primarily due to **four new chairs launched in 2024**, which generated €1,500,000 in donations from sponsors.
- **The Research and Innovation pillar raised €518,652**, mainly from an exceptional €256,000 contribution by the **La Ferthé Foundation**, and €190,000 in funds directed toward the **QBio project**, including €12,000 from **Friends of ENS**.
- **Donations earmarked for ENS libraries totaled €188,564**, an increase of €154,404 compared to 2023, explained by an exceptional €156,000 contribution from the **La Ferthé Foundation**. This donation was dedicated to the creation of the **Gérard Toulouse Fund on the Ethics of Science** and the restoration of the historic room of the Letters Library.
- **The Heritage pillar is exceptionally well funded in 2024 (€83,258)**, thanks to a €83,098 contribution from the **La Ferthé Foundation**. These funds are dedicated to promoting the **Gérard Toulouse Collection** housed at **CAPHES** (Centre for Archives in Philosophy, History, and Publishing of Science), and the **Kastler Collection** housed in the Experimental Sciences Library.
- **Unrestricted donations total €259,925**, and are allocated to ENS projects by the Board of Directors of the ENS Foundation.

We warmly thank our **365 donors**, including **42 first-time donors** to the ENS Foundation in 2024.

Funds received by type of donors



Breakdown of the total amount collected in 2024*

Axe	2024		2023	
	Amount	Donors	Amount	Donors
Student support	1 747 891 €	71	652 139 €	59
Chairs	2 370 000 €	17	675 000 €	6
Research and Innovation	518 652 €	54	261 248 €	42
Libraries	188 564 €	86	34 160 €	98
Heritage	83 258 €	3	195 €	2
Free allocation	259 925 €	130	113 456 €	111
FENS Development	245 126 €	4	639 153 €	3
Totaux	5 413 416 €	365	2 375 351 €	321

* Except in special cases, 10% of each donation is allocated to the Foundation's operating costs.

/ SIMPLIFIED ACCOUNTS

The annual accounts of the ENS Foundation are prepared by its accounting firm (GMBA), certified by its statutory auditor (Forvis Mazars), and approved by its Board of Directors. They are then published in the *Journal Officiel* and submitted to the Prefecture of Paris, the Ministry of the Interior, and the Ministry of Higher Education, Research and Innovation.

SIMPLIFIED INCOME STATEMENT

REVENUES	2024	2023
Service Revenue	229	141
Public grants and operating subsidies	56	64
Funds from public donations	4 358	2 302
Financial contributions	1 056	193
Other operating income	0	40
Use of dedicated funds	807	809
Financial revenue	403	190
Non-recurring income	2	9
TOTAL REVENUES (in K€)	6 911	3 748
EXPENSES	2024	2023
Other purchases and external expenses	2 692	1 768
Financial aid	3	3
Taxes and related payments	15	30
Salaries and wages	484	480
Social Security contributions	169	182
Depreciation and amortization expenses	72	42
Transfers to dedicated funds	3 306	1 109
Other expenses	2	0
Financial expenses	155	122
TOTAL EXPENSES (in K€)	6 898	3 736
NET RESULT (in K€)	13	12

SIMPLIFIED BALANCE SHEET

ASSETS (NET)	2024	2023
Intangible assets	416	437
Tangible Assets	3 457	4 007
Receivables	1 527	364
Short-term investments	4 756	5 906
Cash	3 512	1 019
Prepaid expenses	6	4
TOTAL ASSETS (in K€)	13 674	11 737
LIABILITIES	2024	2023
Net assets	2 471	2 458
Investment grants	1 372	1 372
Dedicated funds	9 265	6 766
Accounts payable and related liabilities	90	113
Tax and social security liabilities	105	276
Other liabilities	226	663
Deferred revenue	145	89
TOTAL LIABILITIES (in K€)	13 674	11 737

/ OUR DONOR RECOGNITION PROGRAMS

For every donation to the ENS Foundation, you are eligible for our recognition programs:

Cothurne Circle
Up to €9,999 over 5 years

Ernest Circle
Between €10,000 and €49,999 over 5 years

Caiman Circle
Between €50,000 and €99,999 over 5 years

Circle 45
Above €100,000 over 5 years

Recognition (or anonymity) in the list of donors in the Foundation's activity report	X	X	X	X
Invitation to <i>the Nuit des Sciences et des Lettres</i> / ENS Events	X	X	X	X
Invitation to the Foundation's Annual Donors' Evening	X	X	X	X
Recognition (or anonymity) on the Foundation's Donor Wall		X	X	X
Private tour of the library and/ or another location related to the projects supported by the donor		X	X	X
Invitation to the ENS director's monthly seminar			X	X
VIP invitations to select ENS events			X	X
Invitation to the annual Major Patrons Dinner with prestigious guest speakers				X
Annual lunch with ENS Director and/ or Foundation President				X
Opportunity to name a Foundation program or location after the donor				X

/ THANK YOU FOR YOUR ENGAGEMENT



The annual donors' evening, the major benefactors' dinner, and many other events are opportunities for us to meet you and thank you for your commitment by our side.

THANK YOU!



/ SUPPORT THE ENS

Make a Donation from France

You are an Individual

Get involved alongside the Foundation and contribute to the development and activities of ENS by choosing to support a scholarship program for ENS students, a specific research or training project, the Ulm-Jourdan library, innovation, or heritage.

- DONATION BY CHECK

Made payable to the ENS Foundation and sent to: Fondation de l'ENS, 45 rue d'Ulm, 75005 Paris, with the completed donation form, available at fondation.ens.psl.eu

- ONLINE DONATION BY BANK CARD

Securely on the website don-fondation.ens.psl.eu

- DONATION BY BANK TRANSFER

Available upon request by email at fondation-ens@ens.psl.eu or by completing and returning the donation form, also available at fondation.ens.psl.eu (under the "How to give?" tab)

- RECURRING DONATION BY DIRECT DEBIT

On the website don-fondation.ens.psl.eu or upon request by email at fondation-ens@ens.psl.eu

- BEQUESTS, LIFE INSURANCE, DONATIONS, STOCK DONATIONS (BONDS, SHARES)

By directly contacting the ENS Foundation:
caroline.gueny-mentre@ens.psl.eu

You are a Company

Become a patron of the ENS Foundation by supporting one of the Foundation's four development pillars:

- **Research and Innovation:** currently, 13 research chairs are funded by companies.
- **Support for ENS Students:** promote social inclusion and international outreach by funding a scholarship program.
- **Libraries:** help enhance their visibility and impact.
- **ENS Heritage:** contribute to its preservation.

With a donation of €100 to €2,500, you make it possible to restore books.

With a donation of €10,000 per year, you help supplement the social scholarship of at least two ENS students for an entire academic year.

With €15,000 per year, you fund a full scholarship for a female science student for one academic year.

With €45,000, you fund a student in computer science and AI for three years.

TAX DEDUCTIONS

66% of your donation is deductible from your income tax, up to 20% of your net taxable income.

If you are subject to real estate wealth tax (IFI), **75%** of your donation is deductible, up to €50,000 per year (for a maximum donation of €66,666).

60% of your donation is deductible from corporate tax, up to 0.5% of your company's annual revenue.

Make a Donation from Abroad

You reside in the USA



You can make a donation to Friends of ENS:

- DONATION BY CHECK

Make payable to Friends of Ecole Normale Supérieure Foundation:

Friends of ENS c/o BlueStone Services, LLC 9690 Deereco Road, Suite 500 Timonium, MD 21093

- DONATION BY CREDIT CARD OR BANK TRANSFER

Via PayPal through the website fondation.ens.psl.eu (under the "How to Give?/International gift" tab) or by contacting **Caroline Guény-Mentré** at: caroline.gueny-mentre@ens.psl.eu

You reside in a European country



The ENS Foundation benefits from the Transnational Giving Europe (TGE) program. Individuals living in the 19 European countries involved can donate to the ENS Foundation and benefit from the tax deductions applicable in their country.

To obtain the contact details of the European partner organizations, you can reach out to **Caroline Guény-Mentré** at: caroline.gueny-mentre@ens.psl.eu



/ THANK YOU TO OUR DONORS!

CIRCLE AN III

Gift of €1,000,000 or more over 5 years

Elisabeth et Jean-Philippe BOUCHAUD (1981 S), Emmanuel BOUSSARD (1990 S), Nicolas PAULMIER (1983 S)

CIRCLE 45

Between €100,000 and €999,999 over 5 years

Caroline et Etienne BECKER (1990 S), Jean BERRARD (1943 S), Sophie et Emmanuel BOISSARD (1989 L), Anne BOUVEROT (1985 S), Philippe CAMUS (1967 S), Fabrice CANCRE (1983 S), Christian DAHER (1986 S), Yacine DOLIVET (1999 S), Catherine DULAC (1982 S), Nicolas DUPUIS, David DURLEMAN (2004 S), Frédéric GAUCHET (1981 S), Christophe GUIR (1983 S), Guillaume HANNEZO (1979 L), Clotilde et François JACKOW (1988 S), Brigitte JACQUARD (1991 S), Caroline et Benjamin JACQUARD (1991 S), Isabelle et Xavier LAZARUS (1991 S), Olivier LEGRAIN, Pierre-André MAUS (1986 L), Xavier MENGUY (1995 S), Patricia et Jérôme PESENTI (1991 S), Arnaud VINCIQUERRA (1984 S), Claude WEISBUCH (1966 S), Lionel ZINSOU (1975 L)

+ 2 anonymous donors

The development of Artificial Intelligence, at the intersection of mathematics and computer science, presents extraordinary opportunities to accelerate the pace of scientific discovery, particularly across all fields of physics and biology. École normale supérieure, the only institution in France capable of truly excelling in all these areas, must therefore continue to uphold its eminence and international reputation—key to its appeal and influence—through sustained and focused private donations, which in turn will attract additional funding. This will set in motion a virtuous cycle of growth, offering long-term prospects to researchers at École normale supérieure, both French and international.

RENÉ SÈVE
Donor (1974 L)

CAÏMAN CIRCLE

Between €50,000 and €99,999 over 5 years

Alain BAUDANT (1970 L), Nicolas BECKMANN, Marie-Claude BIGEON, Delphine et Pascal BLANQUÉ (1985 L), Julien CASSAIGNE (1989 S), Famille MOISSINAC (1990 S), René SÈVE (1974 L)

+ 1 anonymous donor

ERNEST CIRCLE

Between €10,000 and €49,999 over 5 years

Guillaume AMBLARD, Olivier BOUSQUET, Jean-Marc BOTTAZZI (1988 S), Edouard BREZIN, Caroline BRUN MARAIS (1981 L), François BRUNET (1985 L), Bruno CURIS (1976 S), Hervé DAUDIN (1988 S), Barthélémy FAYE (1990 L), Hervé FERRAGE (1987 L), Dominique FERRERO (1968 L), Bernard GOTTLIEB (1968 L), Jean-Marie GUÉHENNO (1968 L), Catherine HARTOG-PAÏSE (1982 L), Stéphane ISRAËL (1991 L), Paul JACOBS, Isabelle KOCHER DE LEYRITZ (1987 S), Maryline KULAWIK, Marwan LAHOUD, Bernard LAFFORET (1964 S), Léonard LAUDER, Jacques MASSOT (1968 L), Yves MEYER (1957 S), Marc MÉZARD (1976 S), Benoit MSELATI (1996 S), Laurent PERPÈRE (1972 L), Marc ROMANO (1988 S), James E. ROTHMAN, Antoine WINCKLER (1976 L), Camille WORMSER (2001 S), Ghislain WOUTERS (1978 L)

+ 3 anonymous donors

COTHURNE CIRCLE

Gifts up to €9,999 over 5 years

Alexandre ABENSOUR (1987 L), Odile ADAM (1957 S), Marianne AKIAN (1982 S), Laurent ALT (1983 S), Jacques ARBEIT (1977 L), Hélène ARBER KREBS (1980 L), Jean-Robert ARMOGATHE (1967 L), Michel AUCOUTURIER (1952 L), Catherine AUDARD (1963 L), Agnès AUDIER (1984 S), Pierre AVERBUCH (1951 S), Catherine AYRAULT (1981 S), Brigitte BAIJOU (1972 S), Philippe BAMAS (1987 S), Rémi BARBET-MASSIN (1980 S), Luc BARBULESCO (1973 L), Claude BARDINET, Claude BARDOS (1960 S), George BARLOW (1955 L), Jean-René BARRA (1953 S), Laure BARRIÈRE (1998 S), Alain BARTHELEMY-VIGOUROUX (1965 L), Emmanuel BASSET (2006 L), Richard BASSET (1972 L), Claire BAUCHE (1958 S), Roland BAUCHOT (1949 S), Christian BAUDELOT (1960 L), Alain BAUDOT (1962 L), Marianne BAYET-CONNEX, Frédéric BEAL (2001 S), Laure BÉDELÈVRE (1999 L), Lucile BEGUER-POITOU (1959 S), Fabrice BEN HAMOUDA-GUICHOUX (2009 S), Kamel BEN NACEUR (1975 S), Gaël BENABOU (1997 S), Marcel BENABOU (1960 L), Chemsedine BENDACI, Jean-Charles BENICHO, Hourya BENIS SINACEUR (1962 L), Xavier BENVENISTE (1974 S), Claude BENZAKEN (1954 S), Hervé BERCEGOL (1985 S), Joël BEREND, Henri BERESTYCKI (1971 S), Janine BERRIOR (1956 S), Dominique BERTOLUS (1977 L), Monique BÉTRAND (1959 S), Jean-Benoît BESSET (2019 S), Claude BÉTOURNÉ (1959 S), Michelle BEYSSADE (1954 L), Lucien BIANCO (1952 L), François-Clément BIDARD (1999 S), Sébastien BIDAULT (1998 S), Samuel BIEBER (2013 L), Lucien BIRGÉ (1970 S), Jean-Paul

Throughout my childhood, each school year was for me a joyful opportunity to discover the world of mathematics, guided by wonderful teachers. When I was in high school, I had a dream—Normale Sup—which represented for me the ultimate symbol of knowledge. During my years at the school, I realized how fortunate I was to benefit from an education that combines freedom and rigor, depth and the ability to personalize one's path. And now, many years later, that sense of gratitude has not diminished. Contributing to the Foundation feels natural to me—so that we can offer young people, regardless of gender or social background, the same opportunity, the same chance to learn in an environment that fosters knowledge and research. Giving is the hummingbird's small drop of water—but as the story goes, it still matters.



AGNÈS PFERTZEL
(1981 S)

BLAIZOT (1969 S), Alain BLANC, Christiane BLANCHARD (1951 S), Claude BLANCHARD (1960 S), Dominique BOCKELÉE-MORVAN (1978 S), Jacques BODY (1950 L), Marcel BOITEUX (1942 S), Baptiste BONDU-MAUGEIN (2001 L), Pierre BONGRAND (1968 S), Brigitte BONNET (1975 S), Nicolas BONNET (1986 S), Jean-Pierre BORDIER (1970 L), Chantal BOTHEREAU (1968 L), Patrick BOUCHARINE (1958 S), Georges BOUNIOL, Pierre BOURGUET (1961 L), Lucile BOURQUELOT (1955 L), Annick BOUTY (1975 L), François BOUVIER (1961 S), Alain BOYER (1970 L), Mireille BRANGÉ (1998 L), Philippe BRAUNSTEIN (1955 L), Louise BREHIER (2009 L), Claude BRIAND, Jean BRIAT (1951 L), Pascale BRILLET-DUBOIS (1990 L), Françoise BRISSARD (1967 L), Jacques BROCARD (1991 S), Maurice BROCK (1968 L), Bernard BROSSOLLET (1977 L), Joël BROUSTAIL (1989 L), Véronique BROWNE-SENTILHES, Jacques BRUN (1957 L), Jérôme BRUN (1969 S), William BRUNAT, David BRUNAT (1992 L), Thomas BUCAILLE (1983 L), Jean BUON (1953 S), Guy BURGEL (1959 L), Jean-Rémi BUTRUILLE (1986 S), Francis CAGNAC (1952 S), Evelyn CAPIZZI (1972 L), Yves CARISTAN (1971 S), Véronique CARON (1981 L), Jean-Michel CARRIE (1964 L), Yves CASEAU (1982 S), Michel CASEVITZ, Pierre CASPARD (1966 L), Maurice CAUSSE (1943 S), Nicole CAZAURAN (1950 L), Jean CÉARD (1957 L), Jean-Pierre CÈBE, Jean CERF (1947 S), Hélène CERF-DANON (1977 S), Alain, Roger, et Louis CHABAS (1979 S), Pascal CHABREDIER, Lucien CHAMBADAL (1953 S), Gilbert CHAMBE (1965), Etienne CHANTREL (1997 L), Alexis CHARANSONNET (1980 L), Annick CHARLES-SAGET (1956 L), Jean CHARUE (1952 L), Sophie CHASSAT (1996 L), Jean-Michel CHASSERIAUX (1961 S), Jean-Louis CHÉDIN (1959 L), Mireille CHEVALLIER, Yves CHEVREL (1959 L), Pierre-André CHIAPPORI (1974 S), Maxime CHIREUX (1986 S), Pierre CITTI (1964 L), Guillaume CLARET (2008 S), Maurice CLAVELIN (1948 L), Mariame CLÉMENT (1994 L), Catherine COEURÉ (1957 L), Evelyn COHEN-LEMOINE (1984 S), Claude COHEN-TANNOUDJI (1953 S), Laurent COHEN-TANUGI (1976 L), Anne-Sophie COLIN (1986 L), Michel COLLOMB (1967 L),

Raphaëlle COLOGON (2002 L), Dominique COMBE (1978 L), Françoise COMBES (1971 S), Roland COMBESCOT (1964 S), Candice CONTEY (1998 S), Antoine CORE-BASSET (2004 L), Paulette CORTES GABAUDAN (1945 L), Marie-Hélène COSSART (1950 S), Alice COUCKE (S), Lydia COUDROY (1983 L), Eliane COUSQUER (1963 S), Marie-Thérèse CRUMEYROLLE (1957 L), Catherine CUSSET (1983 L), Hélène CUVIGNY (1976 L), Marcel CUVIGNY (1945 L), Jean-Marc DABADIE (1968 L), Jacques DABLANC (1950 S), Marco DAL POZZOLO (2016 L), Jean DALIBARD (1977 S), Rose-Anne DANA (1966 S), Yannick DANARD, Gentiana DANILA (1994 S), Christian DARLOT (1972 S), Claire DAUDIN (1987 L), Gérard DAVID (1963 L), Florent DE BODMAN (2003 L), Charles DE LAMBERTERIE (1965 L), Régis DE LAROUILLIERE (1972 S), Olivier DECAZES (1996 L), Cécile DECIMA (1967 L), Pierre DEGOND (1979 S), Marc DELARUE (1980 S), Robert DELORT (1953 L), Michel DEMAZURE (1955 S), Françoise DEMENGEL (1977 S), Victor DEMIAUX (2004 L), Adeline DENIS (2006 L), Jérôme DENIS (1978 S), Brigitte DENKER-BERCOFF, Nicolas DEPAUW (1989 S), Cecilia D'ERCOLE, Pierre DETALLE, Michel DETALLE, Grégoire DEYRIMENDIAN (2003 S), Philippe D'HARCOURT (1951 L), Dominique D'HINNIN (1979 L), Béatrice DIDIER, Martine DIEULIN (1974 S), Michèle DIRINGER (1952 S), Jean-Paul DOGUET (1981 L), Florent DOMINE (1979 S), Ludovic DONATI (2008 S), Gilles DORIVAL (1965 L), Nicolas DREYFUSS (2008 S), Jean-François DREYFUSS (1980 S), Claude DUBOIS (1954 L), Jean-Jacques DUFAURE (1953 L), Jean-Louis DUMAS (1944 L), Laure DUMAZ (2006 S), Michel DUMONT (1958 S), Marie-Françoise DUMONT-HEUSERS, Pascaline DUPAS (1997 L), Benoît DUPAS, Bruno DUPIRE, Monique DUPRONT, Emmanuel DUPUY (2006 S), Catherine DURANDIN (1966 L), Geneviève DURAND-SENDRAIL (1956 L), Guillaume DUTOURNIER (1999 L), Renaud DUTREIL (1981 L), Gérard DUVALLET (1968 S), Louis DUVERT (1943 S), Marianne DUYSCK (L), Gaby EBLE-SCHIEFFEL (1980 L), Catherine EGGERSGLUSS (1984 L), Anne EICHNER-EMMANUEL (1956 L), Claude EL GAMMAL (1980 L), Nicole EL KAROUI (1964 S), Eurydice EL-ETR (2000 L), Vianney ELZIERE (1986 S), Virginie EMSELLEN (1988 S), François ENGUEHARD (1985 S), Marie Hélène ERISTOV, Aymeric EROUART (1998 L), Roger ESTABLET (1959 L), Ellen et Victor FABIUS, Christophe FARNAUD (1986 L), Jean-Pierre FAROUX (1956 S), Antoinette FAUVE-CHAMOUX, Alain FAVRE (1962 S), Antoine FERRI (2002 S), Albert FERT (1957 S), Maurice FIGUERES, Marc FOGLIA (1996 L), Moncef FOLLAIN (1984 L), Simone FOLLET (1955 L), Laure FOURNIER (1991 S), Guy FRACHON (1963 S), Michel FRAISSE (1969 L), Etienne FRANÇOIS (1964 L), Céline FRIGAU MANNING (2001 L), Olivier FRUCHART (1991 S), Marylou GABRIÉ (2011 S), Claire GACHON (1997 S), Geneviève GAGNAIRE, Didier GAGNAIRE (1950 S), Sophie et Romain GAILLAC MARBACH (2011 S), Pierre-Yvan GAL (1956 S), Jean GARAPON (1968 L), Xavier GARRET (1981 S), Alessandro GARCEA, Isabelle GASSINO (1991 L), Sylvie GAUDEL (1971 S), Pierre GAUDIN (1998 L), Jean-Michel GAULIER (1983 S), Marie-Claude GAUTHIER (1960 L), Madeleine GAZANION (1944 L), François GEAL (1985 L), Elisabeth GEFFROY (2013 L), Mireille GÉRARD (1961 L), Hadia GERARDIN (1999 S), Jean-François GERARD-VARET (S), Jean-Louis GERGORIN, Jean Hervé GÉRAIS, Patrick GHEERARDYN, Ellen GIACONE (2002 S), Madeleine GIGOT (1947 S), Roland GILLARD (1968 S), Catherine GIRBIG (1995 L), Isabelle GIRI (1978 S), Marc GIUSTI (1969 S), Pascale GOMEZ (1978 L), Stéphane GOMPERTZ (1967 L), Michel GONNORD (1971 S), Emmanuelle GOUILLART (2001 S), Catherine GOURDON (1979 S), Alexis GRELOIS (1992 L), Christine GRIESMAR (1975 S), Pierre GRINSPAN (1993 S),

An alumna of the School—and I might say, of the Library as well, since I learned and loved learning there as much as in many classrooms—I am happy to be able to modestly contribute to the upkeep of the books that make it a unique place of knowledge and the transmission of learning.

CÉCILE TEROUANNE
(1991 L)

Jean-Philippe GRIVET (1957 S), Julia GROS-DE GASQUET (1993 L), Alain GROSCHARD (1962 L), Dominique GUELFUCCI (1953 L), Anne-Marie GUÉNÉGO (1963 S), Jacques GUÉNÉGO (1963 S), Caroline GUÉNY-MENTRÉ (1997 L), Patrick GUÉRIN (1987 L), Alain GUICHARDET (1950 S), François GUILLAUMONT (1971 L), Jean-Charles GUILLET (1984 L), Alex GUINAUDEAU (2002 S), Arnaud GUINIER (2004 L), Alice GUYON (1988 S), Hervé GUYOT (1975 S), Guillaume HABERT (1997 S), Mireille HADAS-LEBEL (1960 L), François HAMEL (1990 S), François HARTOG (1968 L), Scott HARTSTEIN, Françoise HATCHUEL (1985 S), Yves HELLEGOUARCH (1957 S), Francine HERAIL (1951 L), Jeanne HERCENT (1954 S), François HERLICQ (1952 S), Robert HERNANDEZ (1978 S), Rose-Marie HERVÉ (1951 S), Christine HEURAUX (1978 L), Lin HONGZHOU, Pascal HORNUNG (1979 S), Sylvie HUBIN-DEDENYS (1977 S), Alain HUI BON HOA (1988 S), Jean ILIOPOULOS, Luc ILLUSIE (1959 S), Sophie ITURRALDE (1979 L), Catherine JACHET-JOULET (1976 S), Caroline JACQUES (2005 L), Hervé JACQUET (1959 S), Emile JALLEY (1955 L), Joël JANIN (1962 S), Olivier JAULENT (2001 S), Catherine JEANDEL (1977 S), Guillaume JEANGROS, Hélène JEAN-LEBRUN (1965 S), Jean-Louis JEANNELLE (1994 L), Jennifer JENKINS, Brigitte JOSEPH-JEANNENEY (1968 L), Valéry JOST (1990 S), Grégoire JOUBERT DE LA MOTTE, Etienne-Pascal JOURNET (1976 S), Chloé JOURNO (2003 S), Dominique JULIEN (1979 L), Alain JUMEAU (1964 L), Alain JURANVILLE (1969 L), François KAYSER (1979 L), Lydia KERKHOF (1980 L), Emmanuel KESLER (1985 L), Jean KHALFA (1977 L), Josiane KINDYNIS (1964 S), Christiane KLAPISCH (1955 L), André KLARSFELD (1978 S), Jean-Paul KRESS (1985 S), Patrick LABATUT (2002 S), Harold LABESSE (1997 L), Arnaud LABOURT-IBARRE (1999 L), Guy LACAZE (1964 L), Jean LACOSTE (1970 L), Thierry LAHAYE (1999 S), François LAINEE (1981 S), Hubert LAIZE (1975 L), Janine LAJZEROWICZ (1953 S), Thierry LALANDE (1980 S), Danièle LAMARQUE (1973 L), Gilles LAMBARÉ (1985 S), Liliane LAMBERT (1960 L), Thomas LAMBERT (1994 L), Janine LANCHA (1963 L), Cyril LANGLOIS (1995 S), Martine LANNAUD (1966 S), Dalila LANOUAR, Paule LANSON (1978 L), Jean-Marie LAPEYRE (1993 S), Laurent LAPLAZE (1993 S), Noëlle LAPRÉVOTTE (1956 L), Jean-Claude LARRAT (1969 L), Claire LARSONNEUR (1990 L), Brigitte LARZILLIÈRE (1966 S), Laure LASSAGNE (1998 L), Jean-François LASSALMONIE (1987 L), Cécile LAUGIER (1987 S), Danielle LAURENCIN (2000 S), Pierre LAURET (1977 L), Eric LE BIHAN (1982 S), Elizabeth LE BRAS (1984 S), Jacques LE PAPE (1986 S), Helman LE PAS DE SÈCHEVAL (1986 S), Emmanuel LE ROY LADURIE (1949 L), François LEBOUTEUX (1949 L), Eliane LECARME-TABONE (1959 L), Adrien LECERF (2005 L), Armelle LECLERCQ-RAVEL (1994 L), Michèle LEDUC (1961 S), Monique LEENHARDT (1952 S), Agnès LEFRANC (1995 S), Pierre LEGRAIN (1975 S), Jean-Claude LEHMANN (1959 S), Thierry LEHNER (1977 S), Isoult LEHOUCQ (1986 S), Jean-Michel LEMAIRE (1964 S), Antoine LENCOU-BAREME, Mathilde LENCOU-BAREME (1989 L), Martin LENZ (2002 S), Claire LENZ, Denis LEPELLETIER (1974 S), Tristan LEPELIER (2005 L), Ségolène LEPIILLER (2008 L), Xavier LEROY (1987 S), Eric LEROY DU CARDONNOY (1984 L), Laure LÉVEILLÉ (1986 L), Charles-Edouard LEVILLAIN (1992 L), Carlos LEVY (1970 L), Edmond LEVY (1956 L), Colette LEWINER (1964 S), Françoise LIASSINE (1959 L), Elisabeth LOGAK (1985 S), Lucette LOSCO (1959 S), Stéphanie LOUBÈRE (1992 L), Rémi LOUVEL (2001 S), René LOZACH (1963 S), Alain LUMEDILUNA (1975 S), Clara MADEC-JEANGROS (2004 L), Jeanine MAEDER (1964 S), Jean-Jacques MAFFRE (1962 L), Thuriame MAHÉ (2001 S), Bernard MALGRANGE (1947 S), Michel MALLAT (1977 S), Michèle MALLÉUS (1960 S), Jean-Paul MANEVAL (1962 S), Dominique MANGIN, Marie-Christine MARCELLESI (1990 L), Edouard MARCUS (1995 L), Laure MARCUS (1995 L), Yves MARECHAL (1959 S), Thierry MAREMBERT (1984 L), Isabel MAREY-SEMPER (1988 S), Mahendra MARIADASSOU (2004 S), Séverine MARIN (1993 L), Roger MARLIN (1970 S), Christiane MARMECHE (1970 S), Victor MARTIN (1995 S), Marie-Madeleine MARTINET (1966 L), Christian MARZOLIN (1989 S), Jean-Louis MASNOU (1960 S), Patrick MASSIN (1988 S), Alain MASSON (1964 L), Sylvie MASSONNET-CHEVALIER (1979 S), Jean-Marie MATHIEU (1953 L), Jean MATRICON (1953 S), François MAUREL (1997 S), Florence MAURICE (1982 L), Fabien MAURY, Valérie MAZZA (1988 S), Merlin MEHEUT (2000 S), Pierre MEIN (1954 S), Françoise MELONIO (1972 L), Corinne MENAGE (1974 L), Eve MENK-BERTRAND, Arnaud MENTRÉ (1999 L), Ibrahim MERAD (2017 S), Jean-François MERLE (1972 L), Evelynne MESCLIER (1984 S), Philippe MESINI (1984 S), Sandrine MESSAGER (1985 S), Jean METAYER (1955 L), Maurice MEULEAU (1949 L), Diane MEUR (1990 L), Geneviève MICHAU

When the Foundation called on alumni to support the restoration and preservation of library books, I was immediately moved by the project. The School gave me so much. Today, I'm grateful for the opportunity to give back and help preserve the exceptional literary and scientific resources that are part of the education offered to young normaliens.



ALEXANDRE VALOT
(1997 S)

(1942 S), Yves MICHAUD (1964 L), Florent MICHEL (2010 S), Max MICHEL (1976 S), Charlotte MICHELET (1994 L), Dominique MICHELET (1968 L), Anne MILLER (1986 L), Jean-Michel MILLET (1972 S), Olivier MILLET (1974 L), Michèle MINGUIN-DEBRAY (1958 S), Sophie et Denis MINON ET ROUSSET (1982 L), Nathanaël MION (2010 L), Cécile MOLINIER (1970 L), Thierry MONTMERLE (1965 S), Francine MORA (1971 L), Patrick MORA (1971 S), Pierre MOREL (1952 S), Gabrielle MORILLON, Cécile MORRISON (1958 L), Alain MORVAN (1965 L), Jacques MOTTAL (1953 S), Nicolas MOUTAL (2013 S), Arthur MULLER (2003 L), Françoise MULLER (1955 S), Arthur MULLER (2003 L), Guillaume NAVAUD (1997 L), Jacques NEEFS (1966 L), David NELIGAN, Louis NELITNER (1992 S), Marie-Dominique NENNA (1982 L), Francis NETTER (1945 S), Anne-Marie NICOLAS (1961 S), Jean-Louis NICOLAS (1960 S), Geneviève NIHOUL (1960 S), Georges NIVAT (1955 L), Gary OGER (2007 S), Marie-Catherine OLIVI (1990 L), Daniel OLSCHWANG (1958 S), Philippe ORTEL (1987 L), Elisabeth PACHERIE (1980 L), Bernard PANNETIER (1967 S), Danielle PANSU, Isabelle PANTIN (1972 L), Sylvain PAPAVERO, Hélène PARENTY (1990 L), Edith PARLIER-RENAULT (1975 L), Jeanne PARMENTIER (2004 S), Jean-Claude PECKER (1942 S), Paul-Antoine PEIGNON (2004 S), Marie-Claude PELLISSIER-FERRAND (1965 S), René PELLE (1958 L), Benoît PELLISTRANDI (1986 L), Philippe PELTRE, Marie-Louise PELUS-KAPLAN (1965 L), Olivier PENE (1962), Michèle PERTHUISOT (1963 S), Pierre PETITMENGIN (1955 L), Etienne PEYRAT (2007 L), Monique PEZOUT-CHANUSSOT (1982 L), Sophie PIAU (1984 L), Jean-Claude PICARD (1956 S), Benoît PIER (1992 S), Jacqueline PIGEOT (1960 L), Jean-Sébastien PILCZER (1997 L), Nicolas PINAUD (1994 L), Geneviève PINAULT (1974 L), Georges-Jean PINAULT (1974 L), Jérémie PINGUET (2015 L), Sylvain PION (1994 S), Philippe PLOIX, Michel POIRIER (1948 L), Dominique PONNAU (1958 L), Patrick PONSOLLE (1965 L), Paul PONSONNET (1943 S), Marc PORÉE (1975 L), Nicole POUX (1953 S), Jean-François PRADAT-PEYRE, Jean PRADINES (1954 S), Stéphane PRANGE (2009 S), Philippe PREAUX (1969 L), Guillaume PRIGENT (2010 L), François PROUST (1945 S), Gérard PUISEUX, Simone PUISEUX-DAO (1949 S), Christiane PUJOLLE (1978 S), Camille PUTOIS (1990 L), Jin QIAN DEL PINO (2017 L), Thomas QUÉNAN (2020 S), Isabelle RABUT (1973 L), Elisabeth RACINE-DOGNIN (1959 S), Jean RAIMOND (1955 L), François RATTE (2001 L), Michèle RAYNAUD (1958 S), Sylvaine REB-COMBEAUD (1985 L), René REBUFFAT (1952 L), Christelle REGGIANI (1990 L), Guillaume REMY (2011 S), Maurice RIEUNEAU (1954 L), Christian RIOUX (1957 S), Françoise RIOUX, Antoinette RIPOCHE, Arthur RIPOLL (1997 L), Roger RIPOLL (1955 L), Francisco ROA BASTOS (2001 L), Gabriel ROBIN (1949 L), Pierre ROCHETTE (1979 S), Sylvie ROELLY (1979 S), Tiphaine ROLLAND-GIRAUD (2009 L), Laurent ROSAZ (1986 S), Gérard ROUBICHOU (1960 L), François ROUBILLE (1997 S), Marie-Françoise ROUFFIAT (1975 L), Côme ROULET DE LA BOUILLERIE (2013 L), Emmanuel ROUME, Gilbert ROUQUIÉ (1975 S), Roger ROY (1949 S), Manuel ROYO (1977 L), Gilles RUBINSTENN (1990 S), Alexandra RUEL (2001 S), Jacques SAGNÉ (1992 S), Cyprien SAITO (1989 S), Thierry SALMONA (1973 S), Françoise SALVAN-RENUCCI (1982 L), Didier SAPAUT (1970 L), Odile SARRAZIN (1958 L), Bernard SAUGIER (1962 S), Monique

SCHERRER (1968 L), Pierre SCHNEIDER (1982 L), Christophe SCHRAMM (2001 L), Elisabeth SCHWARTZ (1962 L), Anne SCHWARTZBROD (1989 S), Charles SEIBERT (1978 L), Nicolas SENNEQUIER (1991 S), Fabrice SERODES (1998 L), Claudine SERRE, Fanny SHULMAN (1950 S), Bruno SICARDY (1978 S), Denise SIMATOS (1956 S), Paulette SIMERAY (1953 S), Adrien SIX (1987 S), Emmanuel SOLIVE, Carlos SONNENSCHNEIN, Olivier SORBA (1979 S), Christophe SOULÉ (1970 S), Olivier SOUTET (1971 L), Michel SOUTIF, Jean-Michel SPIESER (1963 L), Jean SPIRI (2002 L), Michèle STANCHINA (1971 S), David STEEL, Alexandre Simon STÉFAN, Jean-Luc STEHLÉ (1966 S), Alexandra-Marie STÉPHANE, Roger STUVERAS (1955 L), Michèle SULLIVAN (1959 L), Christian SWIT (1971 L), Anne SZYMCAK (1992 S), Junko TAKEUCHI, Christian TANGUY (1979 S), Sophie TARNEAUD (2007 L), Isabelle TAUZIN (1981 L), Lydia TCHANG (1966 S), Emmanuel TERRAY (1956 L), Jean-Louis THEBAULT (1971 S), Laurent THEIS (1969 L), Catherine THIOLON (1972 S), Roland THOMAS (1977 S), Dominique THON (1981 S), Charles TOROSSIAN (1984 S), Anne TORREGROSSA (1979 L), Marisol TOURAINE (1979 L), Alexandre TOURRAIX, Céline TRAUTMANN-WALLER (1987 L), Valérie TRAVIER (1985), Catherine TREILHOU-BALAUDE (1983 L), Jean TRICHT (1956 S), Christian TRIFFAUT, Jean-Louis TU (1991 S), José TURPIN, Eric VALLET (1996 L), Alexandre VALOT (1997 S), Nathalie VANFASSE (1992 L), Serge VARJABEDIAN (1989 S), Nicolas VATIN (1976 L), Alain VENTURINI (1975 L), Yves VERHOEVEN (1999 S), Alain VERSINI (1954 L), Laurent VERSINI (1953 L), Julien VEYRIER (1999 L), Jean-Renaud VIALA (1985 S), Jean-Louis VIALLE (1966 S), Anne VIAL-LOGEAY (1984 L), Madeleine VILLARD (1951 L), François VILLENEUVE (1974 L), Catherine VINCENT, Isabel VIOLANTE (1990 L), Charles VULLIÉZ, Jacqueline WETTERWALD (1939 L), Anne-Edgar WILKE (2014 S), Pascale WITZ, Michel WOHRER (1971 S), Frédéric WORMS (1982 L), Guy WORMSER (1975 S), Mariette YVINEC (1973 S), Mary-Anne ZAGDOUN (1967 L), Philippe ZANINI (1975 S), Anne ZINK (1956 L)

+ 96 anonymous donors



FOUNDATIONS AND ASSOCIATIONS

AFM - TÉLÉTHON, ALEXANDER VON HUMBOLT FOUNDATION, ALFRED P. SLOAN FOUNDATION, ARPAMED, A-ULM, FEDERATION POUR LA RECHERCHE SUR LE CERVEAU, FONDATION ARDIAN, FONDATION ABEONA, FONDATION AGIR POUR L'AUDITION, FONDATION ARC, FONDATION BETTENCOURT SCHUELLER, FONDATION CHANEL, FONDATION CFM, FONDATION DE FRANCE, FONDATION DU RISQUE, FONDATION FONDAMENTAL, FONDATION ENGIE, FONDATION FLORENCE, FONDATION FRANCAISE POUR LA RECHERCHE SUR LA BIODIVERSITE, FONDATION FYSSEN, FONDATION GORDON ET BETTY MOORE, FONDATION GROUPAMA, FONDATION INSTITUT EUROPLACE DE FINANCE, FONDATION LA FERTHE, FONDATION LUIGI ROVATI, FONDATION L'ORÉAL, FONDATION MAISON DES SCIENCES DE L'HOMME, FONDATION MALADIES RARES, FONDATION MEYER, FONDATION POUR LA RECHERCHE MEDICALE, FONDATION SIMONE ET CINO DEL DUCA, FONDATION TARA, FONDATION YVES COTREL, FONDOS AXA POUR LA RECHERCHE, FONDS DE DOTATION DE L'AFER POUR L'INTERET GENERAL, FONDS DE DOTATION ELAIA, FONDS DE DOTATION QUBE RESEARCH AND TECHNOLOGIES CHARITY FUNDS, FONDS L'ORÉAL POUR LES FEMMES, FONDS NOTRE EUROPE, INSTITUT DE FRANCE, JAMES MC DONNEL FOUNDATION, LIGUE NATIONALE CONTRE LE CANCER, SIMONS FOUNDATION, SQUAREPOINT FOUNDATION, UK ONLINE GIVING FOUNDATION

ENTERPRISES

AGENCE FRANCAISE DE DEVELOPPEMENT, AIR LIQUIDE, AIRBUS, ALIZEE INTERNATIONAL, ARDIAN, ARIANE GROUP, AXA ASSURANCES VIE MUTUELLE, AXA FRANCE, AXE KAMET, BE YS, CAPGEMINI CONSULTING, CAPITAL FUND MANAGEMENT (CFM), CARNEGIE CORPORATION, CDISCOUNT, CHANEL, CITADEL, CNES, CNRS, COVINVEST SAS, COWIN, DASSAULT SYSTEM SE (3DS), DATAIKU, ENGIE NORTH AMERICAS, EUTELSAT, FACEBOOK FRANCE, GIFAS, GMBA, GOLDMAN SACHS GIVES, GOOGLE, GROUPAMA, GROUPE CASINO, HUAWAI, LOUIS VUITTON MALLETTIER, LP CONSEIL, MACIF, MGEN, MITSUBISHI HEAVY INDUSTRIES, MORPHO, NOMADIC LABS, PIGLOB, QRT (QUBE RESEARCH AND TECHNOLOGIES), RÉGION IDF, RELEVANC, REXEL, SAFRAN, SHIFT TECHNOLOGY, SOCIÉTÉ GENERALE, SODERN, SQUAREPOINT CAPITAL, THALES, THALES ALENIA SPACE, THÉÂTRE DE LA REINE BLANCHE, VOFI CONSEIL, W.L GORE & ASSOCIATES, WELCOME EVENTS SAS

FOUNDING MEMBERS

They made the creation of the ENS Foundation possible in 1986:

ALLIANZ, AREVA, AXA, BPCE, BPI FRANCE, BULL, CEA, CRÉDIT AGRICOLE, EDF, HAVAS, LAGARDERE, SAINT-GOBAIN, SANOFI, SOLVAY, VEOLIA.
As well as: Yves CANNAC, Hubert CURIEN, Laurence DANON, Gilles de MARGERIE, Philippe MAHRER, Jean-Charles NAOURI, Lionel ZINSOU.

/ OUR ACTIONS IN 2024 IN FIGURES



Thanks to the support of over **350 individual donors**, including **42 new donors**

Support to Normalien students

26% of normaliens hold scholarships

5 scholarship programs in support of normaliens during their schooling

Number of scholarship holders at the beginning of the 2024 school year:

30 Women in STEM Scholarships

17 Computer Science and AI Scholarships

10 Mathematics Scholarships

5 Olympic Scholarships

100 Financial Aid Scholarships

Research and Innovation

4 New research chairs launched in 2024

13 Active research chairs supported by patronage

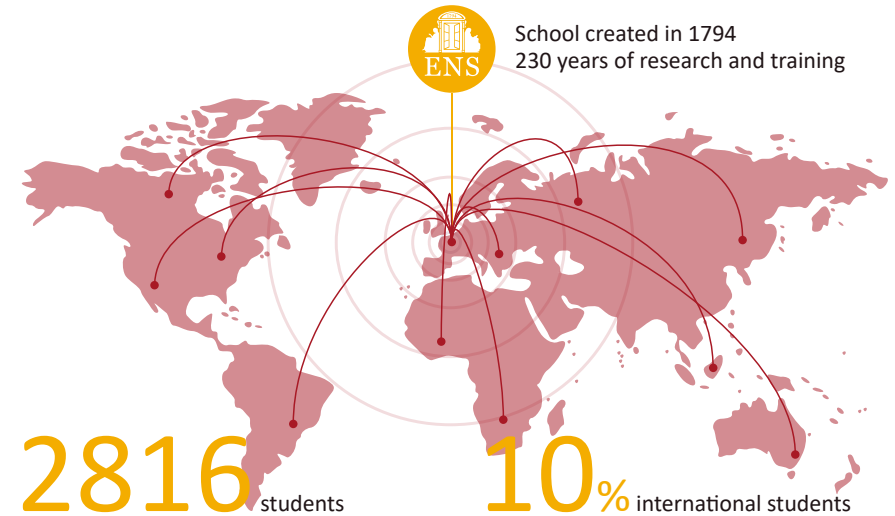
20 Patron businesses engaged in fundamental research

4 Thematic keys: artificial intelligence, health, climate, and global humanities

Heritage and the Library

More than **15** rare and precious publications from the library have been restored in 2024

/ THE ENS IN FIGURES



130 000 m²
4 campuses

74 ERC since 2015

650 permanent professor-researchers

700 doctorate students

9 libraries

29 laboratories

15 departments

9 master's programs

18 doctoral schools attached to the ENS

14 Nobel Prizes

12 Fields Medals

2 Abel Prizes

1 Gold CNRS Medal

16 Silver CNRS Medals

2 Breakthrough Prizes





EDITORIAL

Fondation de l'ENS, Clémence Duron

GRAPHIC DESIGN

Gaël Rolland

PRINTING

Imprimerie Mely-Melloni, Paris

VISUAL COPYRIGHT

Pôle Communication de l'ENS-PSL, Aurélia Blanc, DR,
Emilie Groleau, Wikimedia Commons

FONDATION DE L'ÉCOLE NORMALE SUPÉRIEURE

45 rue d'Ulm, 75005 Paris

fondation-ens@ens.psl.eu

www.fondation.ens.psl.eu

